



# paz torras

spring-summer 2024

## workbook



## Proyecto Sostenible - change together

-Choose the way to take care of nature follow your intuition-

'**Change together**' es un camino hacia la moda más sostenible y ética, reduciendo el impacto medioambiental sobre el planeta, protegiendo la naturaleza, cambiando el método de la industria de la moda y buscando una nueva forma de convivencia con el entorno, utilizando más recursos naturales, menos sectores contaminantes y reduciendo el consumo de agua.

El objetivo es aumentar la proporción de fibras sostenibles en las colecciones y promover un modelo de economía circular, el reciclaje y la reducción de los residuos textiles.

Trabajamos con proveedores y talleres de proximidad que cuidan el proceso y la elaboración del producto cumpliendo con nuestro proyecto.



## Sustainable Project - change together

-Choose the way to take care of nature follow your intuition-

'**Change together**' is a path towards more sustainable and ethical fashion, reducing the environmental impact on the planet, protecting nature, changing the method of the fashion industry and seeking a new way of coexistence with the environment, using more natural resources, fewer polluting sectors and reducing water consumption.

The objective is to increase the proportion of sustainable fibers in the collections and to promote a circular economy model, the recycling and the reduction of textile waste.

We work with local suppliers and workshops that take care of the process and the elaboration of the product, accomplishing with our project.

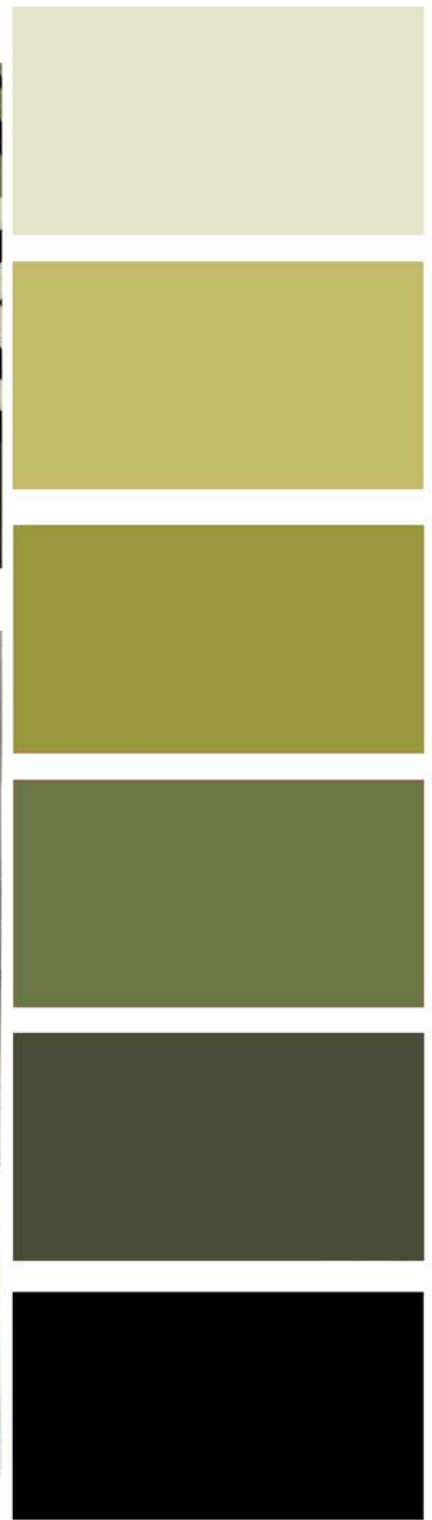
# color palette



workbook - mood 1

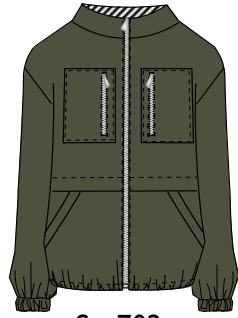


mojito





S - 207



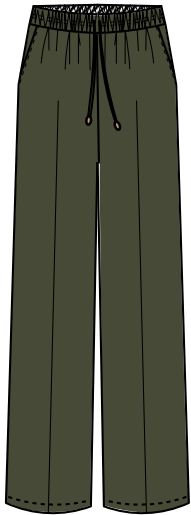
S - 702



S - 220



S - 206



S - 405



S - 802



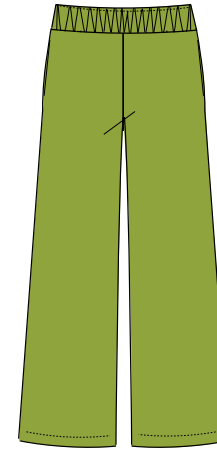
S - 305



S - 423



S - 808



S - 411



S - 102



S - 503



S - 518



S - 903



S - 902



S - 311



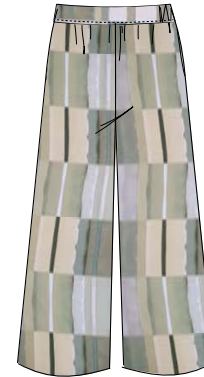
S - 814



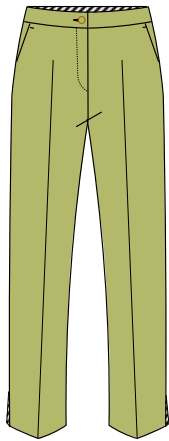
S - 304



S - 222



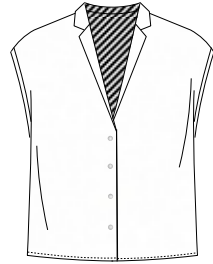
S - 420



S - 415



S - 507



S - 213



S - 514



S - 211



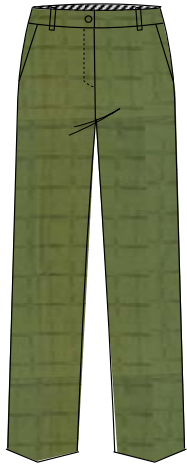
S - 419



S - 219



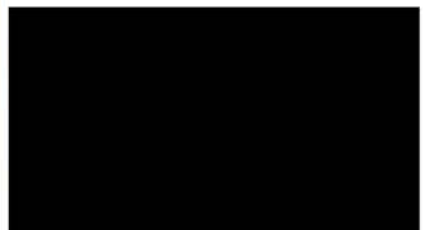
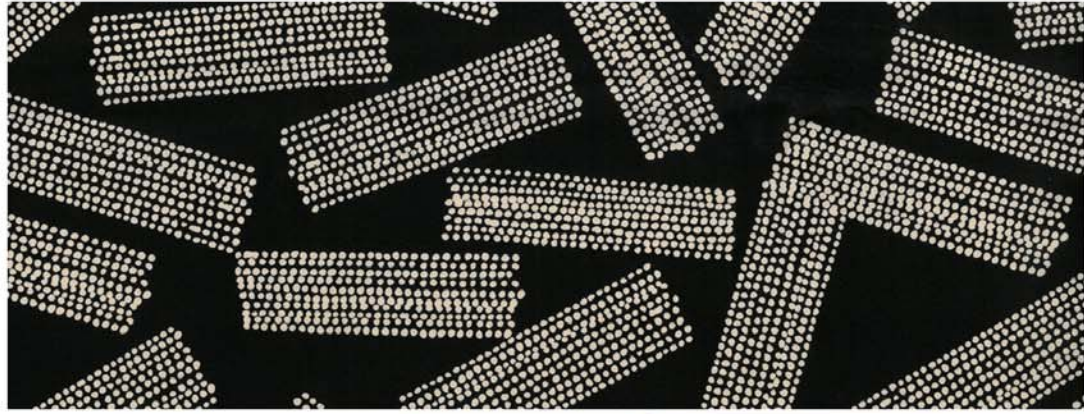
S - 306

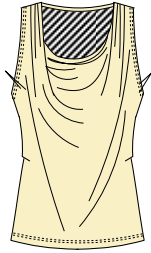


S - 438



*workbook - mood 2*

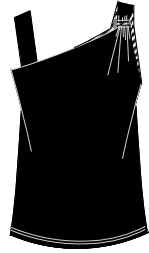




S - 811



S - 512



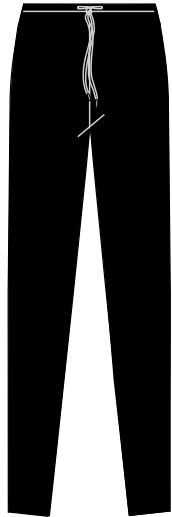
S - 813



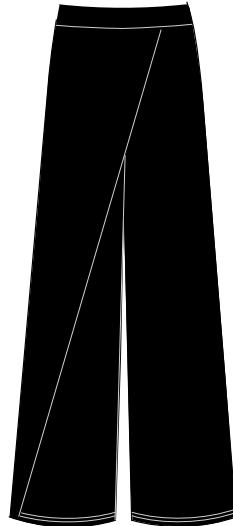
S - 810



S - 816



S - 400



S - 426



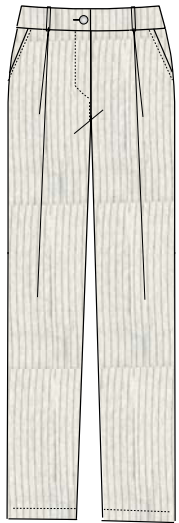
S - 425



S - 333



S - 215



S - 432



S - 908



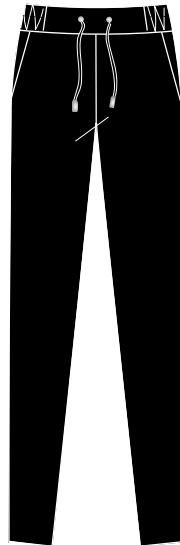
S - 906



S - 013



S - 505



S - 412



S - 817



S - 226



S - 434



S - 907



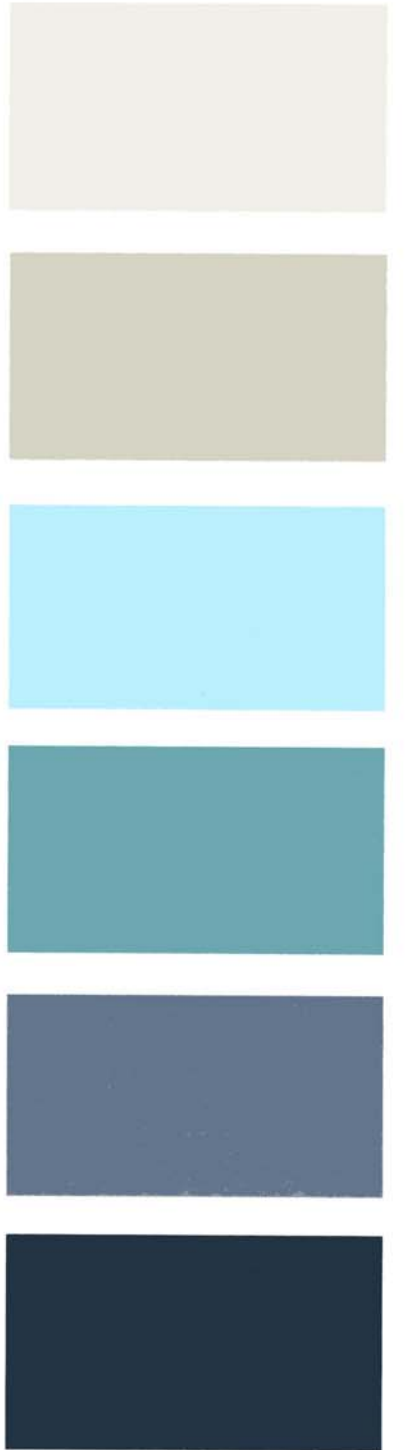
S - 314



*workbook - mood 3*

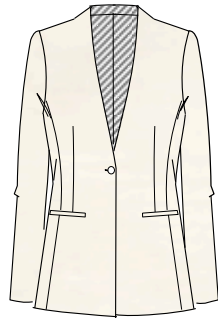


# blue lagoon





S - 300



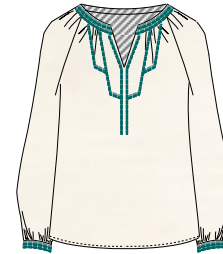
S - 509



S - 500



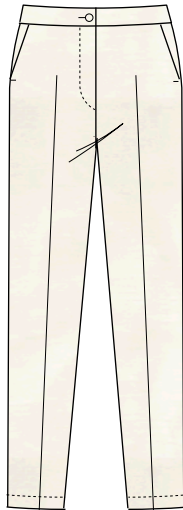
S - 010



S - 201



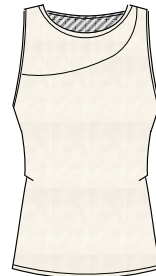
S - 210



S - 436



S - 200



S - 905



S - 100



S - 418



S - 103



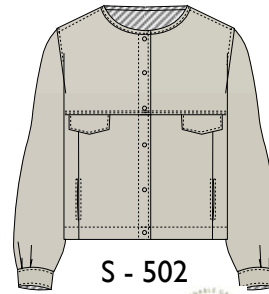
S - 310



S - 700



S - 800



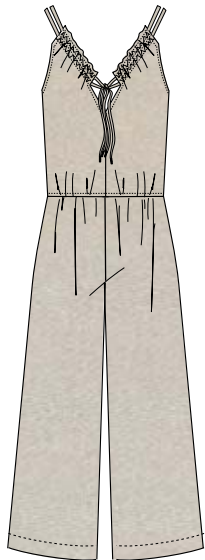
S - 502



S - 818



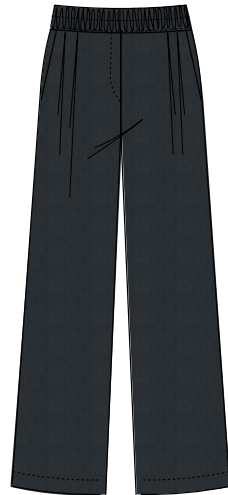
S - 335



S - 330



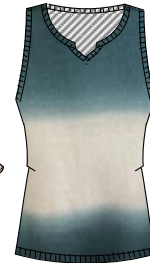
S - 303



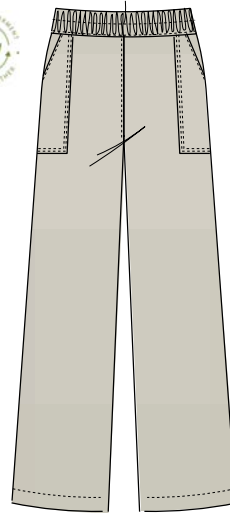
S - 429



S - 231



S - 901



S - 404



S - 105



S - 437



S - 315

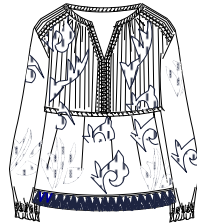




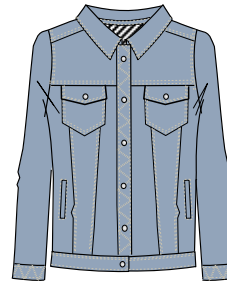
S - 508



S - 012



S - 203



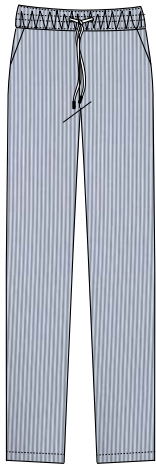
S - 501



S - 204



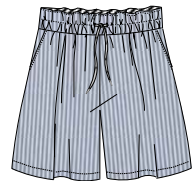
S - 809



S - 431



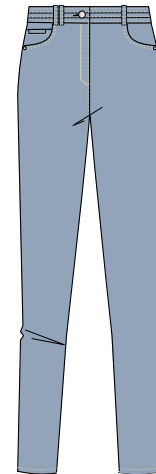
S - 805



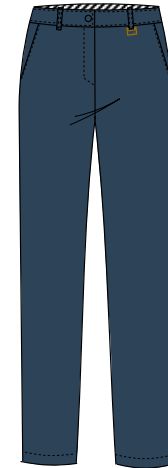
S - 409



S - 202



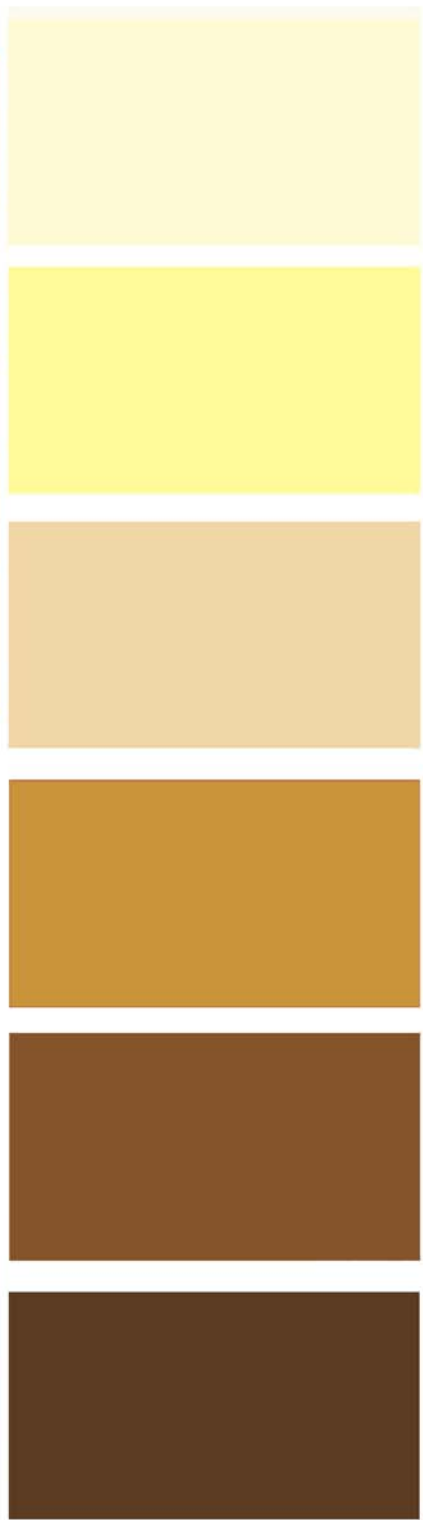
S - 402



S - 408

*workbook - mood 4*

malibú







S - 208



S - 504



S - 511



S - 223



S - 806



S - 515



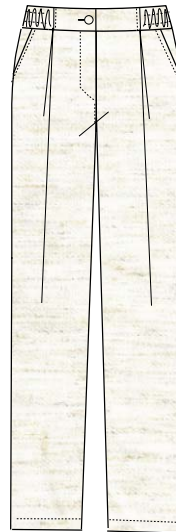
S - 334



S - 101



S - 307



S - 416



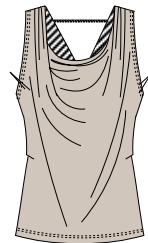
S - 209



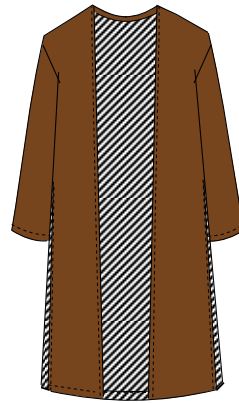
S - 424



S - 513



S - 801



S - 510



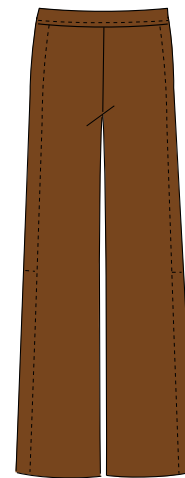
S - 229



S - 421



S - 212



S - 414



S - 309





S - 820



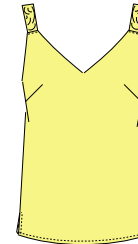
S - 011



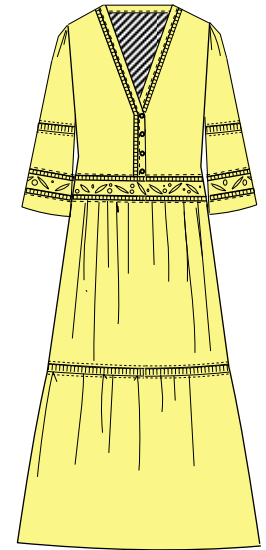
S - 225



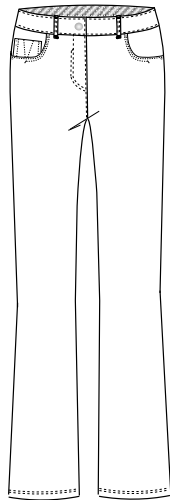
S - 804



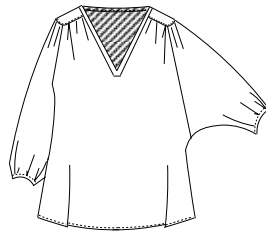
S - 230



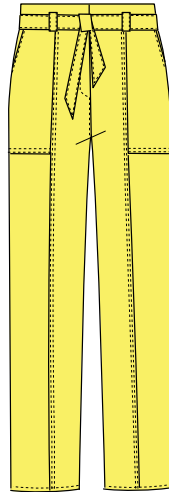
S - 301



S - 403



S - 205



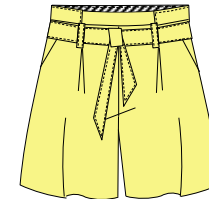
S - 407



S - 900



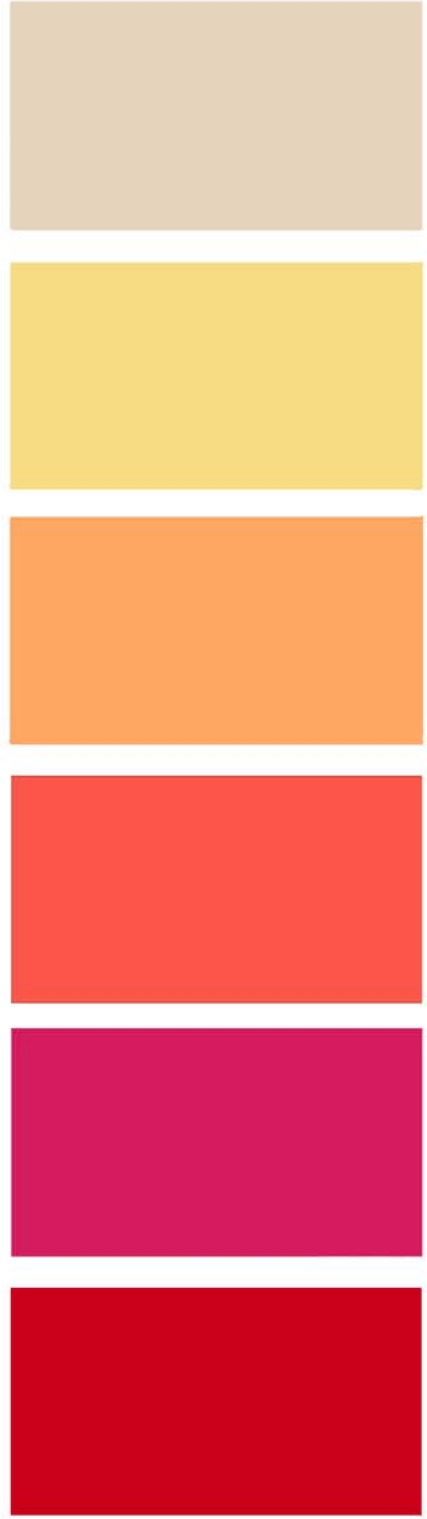
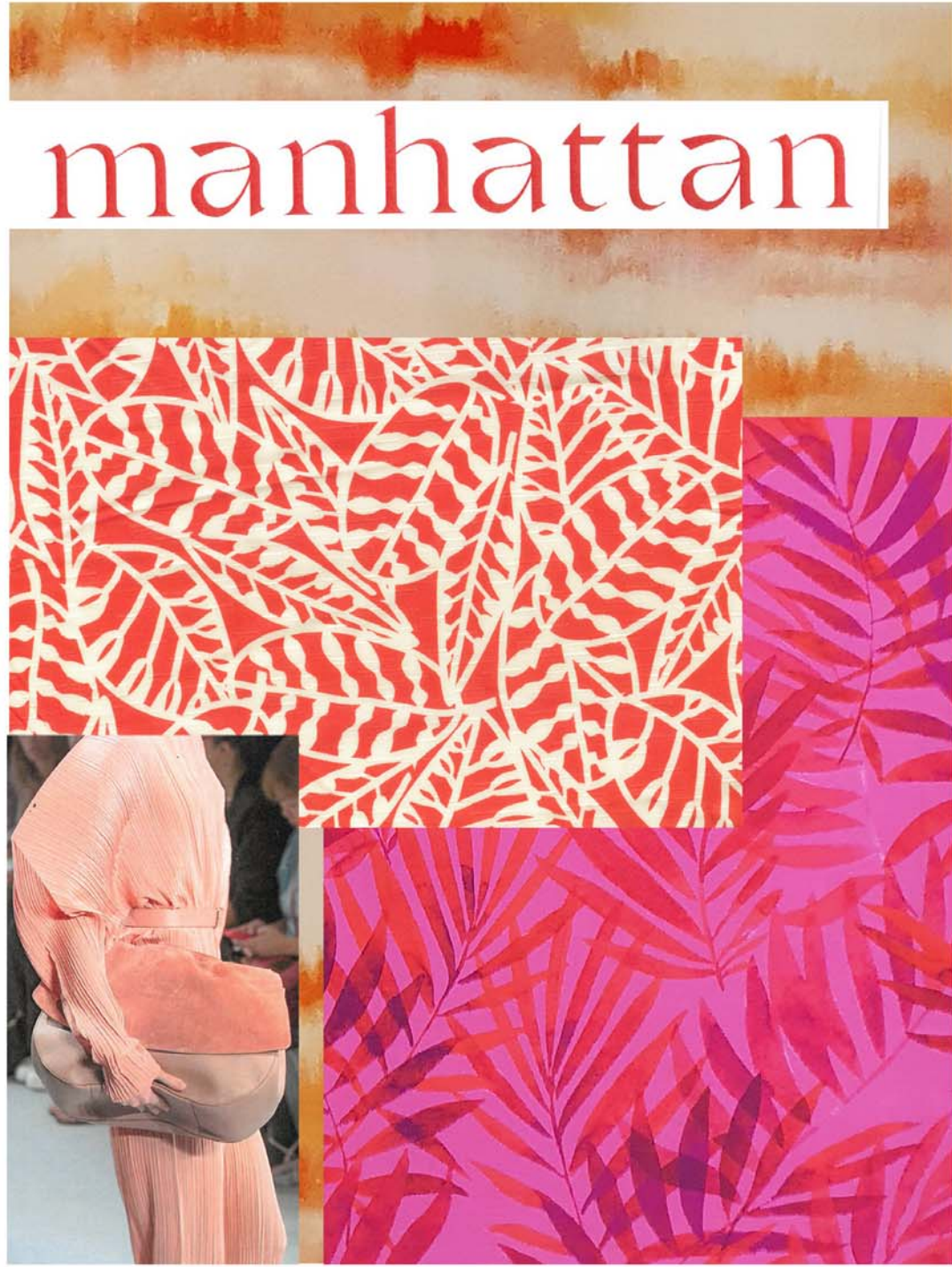
S - 104

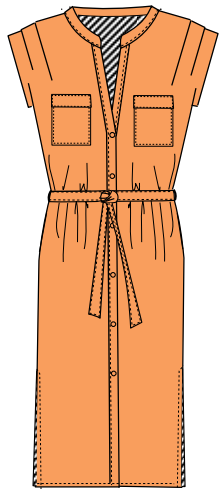


S - 406

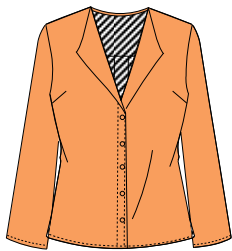


*workbook - mood 5*





S - 308



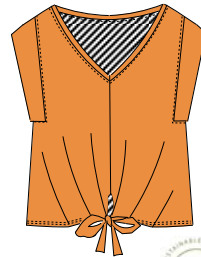
S - 217



S - 807



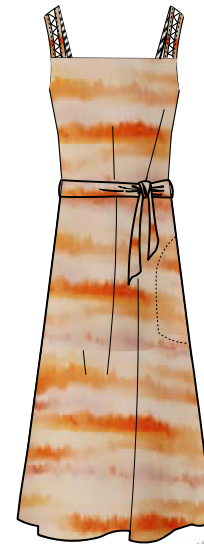
S - 227



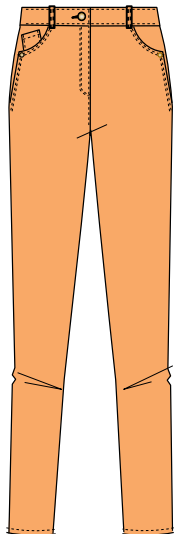
S - 803



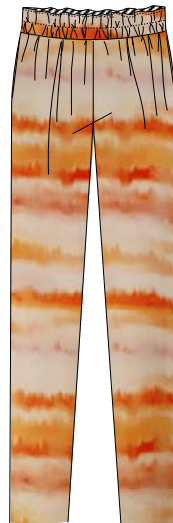
S - 228



S - 312

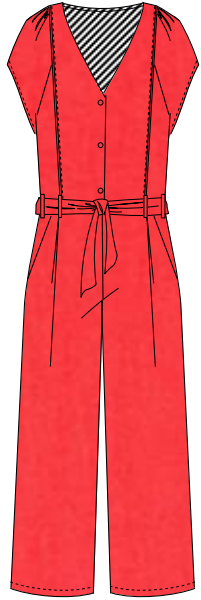


S - 410



S - 439





S - 331



S - 245



S - 413



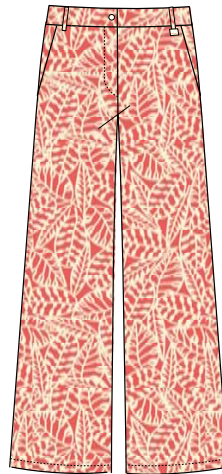
S - 313



S - 216



S - 214



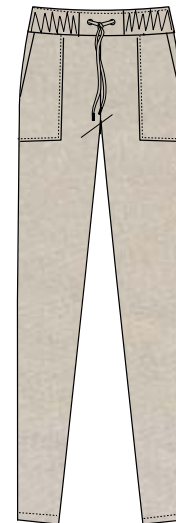
S - 417



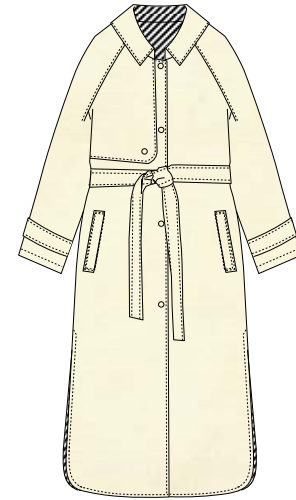
S - 819



S - 904



S - 430



S - 701

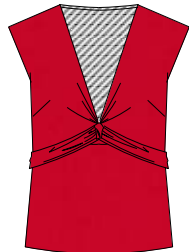


S - 302





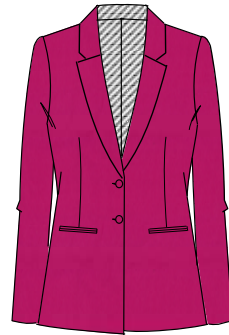
S - 316



S - 218



S - 517



S - 506



S - 812



S - 815



S - 516



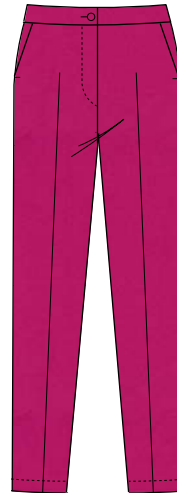
S - 902



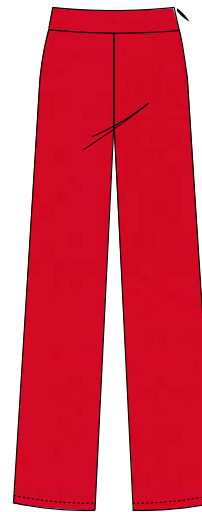
S - 435



S - 224



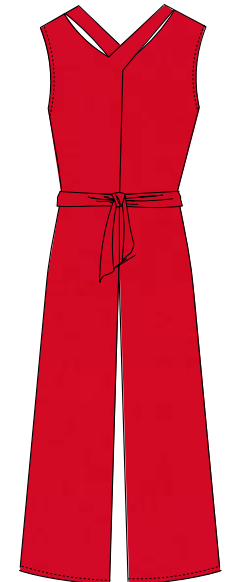
S - 436



S - 401



S - 422



S - 332

*pag tonnas — bags*



S.020



S.021

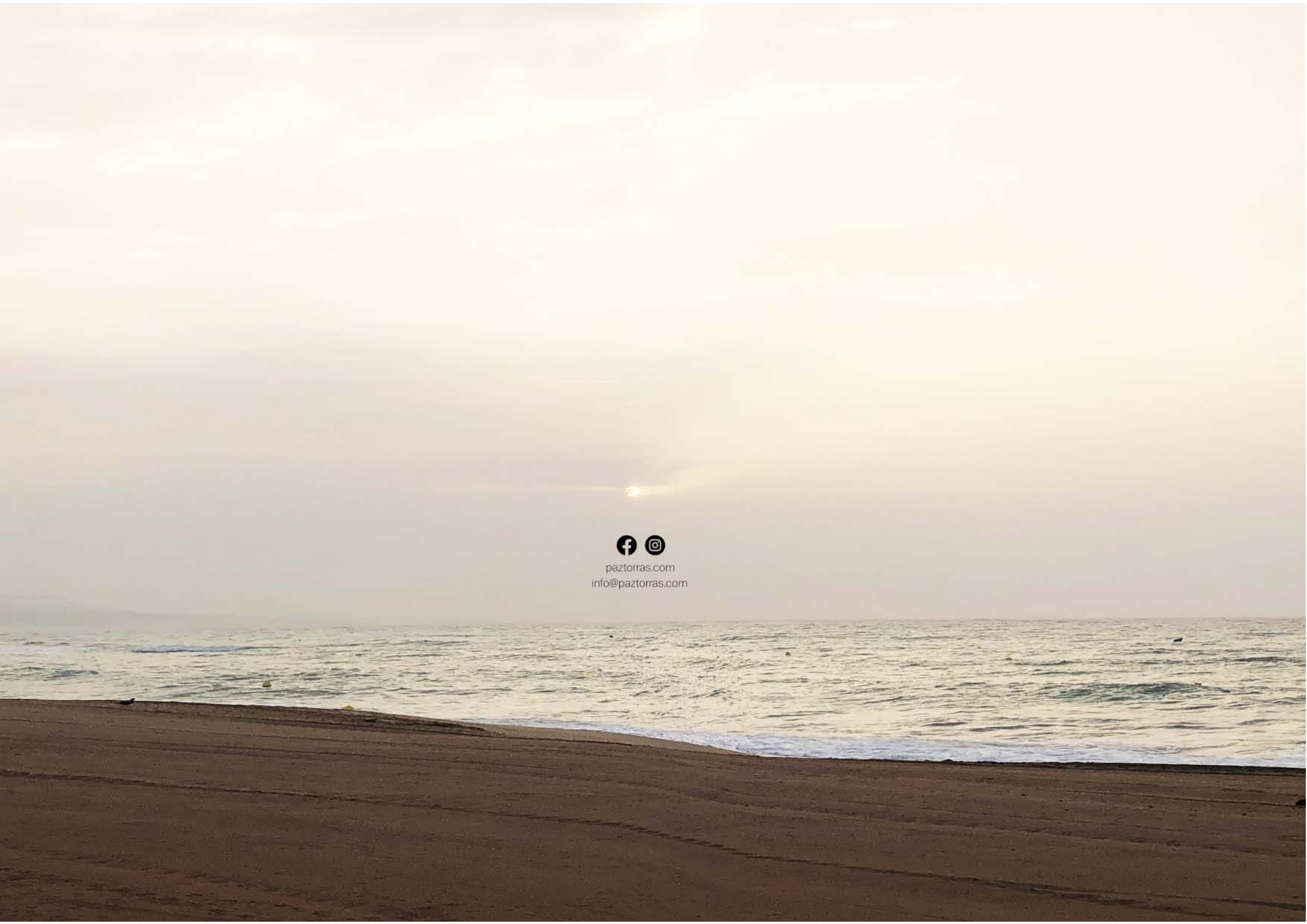


S.022



S.023





[paztorras.com](http://paztorras.com)  
[info@paztorras.com](mailto:info@paztorras.com)